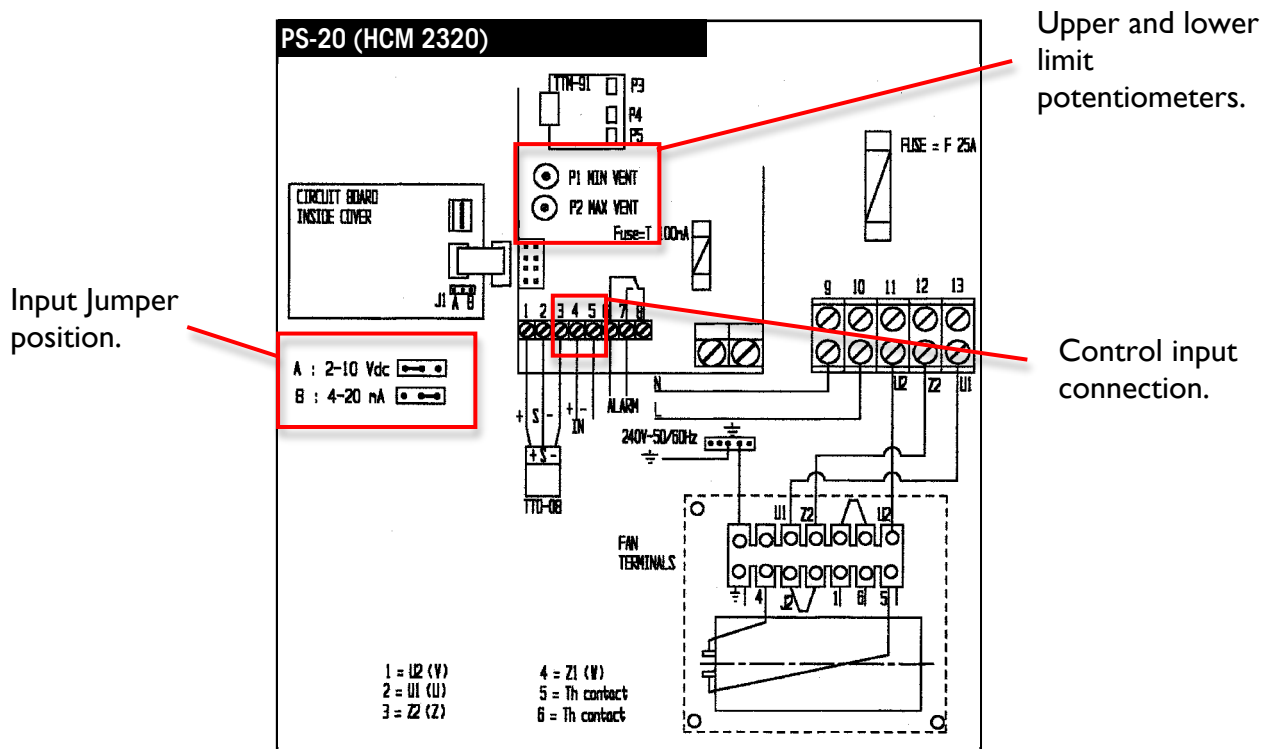


Operation of DRAMM AME Fans from an External Computer

The speed of the Dramm AME Fans can be controlled by an external computer by using a proportional output signal connected to a Dramm Speed Controller.

Each of the following Speed Controllers have an input that will accept either a 20-Vdc or 4-20 mA signal. The signal type is selected by the position of jumper J1 as seen in the diagram below.

Upper and lower limits on the speed of the fan are set using the minimum and maximum ventilation potentiometers inside the controller. These are also highlighted on the diagram below.



As these signals are proportional analog signals, the controller will accept the low signal as the minimum ventilation rate and the high signal as the maximum ventilation rate. As the signal increases from low to high, the controller will adjust proportionally.

NOTE: Any signal from an external source will override the knob on the front of the speed controller. If there is no signal, the knob on the front of the speed controller will adjust the speed of the fans.

This proportional control will also turn off the fans. To turn off the fans, the external signal must be below the low signal (4 mA or 2 Vdc). This eliminates the need for a separate relay to cut power to the fan circuit.